

DF703 Waste Bin Detector GPRS

Data sheet



Version:V2.1

Date:2021-6-08

Change Notes

V2.1 Modify blind area.

V2.0 Initial DF703 Waste Bin Detector.

V1.0 Initial DF702 Waste Bin Detector.

Index

Cautions	4
Disclaimer	5
1 Overview	6
1.1 Build-in Structure(GPRS)	6
2 Features	6
3 Application	6
4 Specification	7
5 Mechanical Size	8
6 Software Platform	8
6.1 Network Diagram	8
6.2 Application Software	9
7 Protocol and API Interface	11
8 Installation & Test	11
8.1 Boot sensor	11
8.2 Installation	11
9 Package	13
10 Video Link	13

Cautions

- The battery in the device is Non-Chargeable.
- Please Do Not recharge it.
- If it is Out of Power please order new battery from CNDingtek.
- The battery can not Work more then +85°C Degree Temperature.



Disclaimer

CNDingtek ® keep own his best the solved manual should be accurate and very close to the configuration, protocol and installation process. The CNDingtek reserved all the rights to modify the hard ware software and specification, color, guide and package and other all about the devices of CNDingtek products.

Due to the manually photos of the products and printing reasons the photos in this documents maybe different from the real released products. Please use the released product as final reference.

1 Overview

The DF703 sensor is designed for waste bin (Trash Bin) status detection of waste Bin outside or inside used. It detect the following status for the customer of using place for the user

- Full
- Empty
- Flame risk
- Inclined (fall)

1.1 Build-in Structure(GPRS)

DF703 waste Bin detector is build through the GPRS module. it transmit the status via GPRS/GSM network to base station, then via internet network to network server to application server. Finally user can monitor the status remotely.This mobile application is very useful and helpful for the user at the finally user can monitor the status remotely.

It is optional for different frequency, 850/900/1800/1900Mhz.

As it is with algorithm of low power consumption, the internal battery can work for more than 1 years (at 4 hours interval upload interval).

2 Features

Following the features of DF703 Waste Bin GPRS detector are given.

- Long lifetime, As it is with algorithm of low power consumption, the internal battery can work for more than 1 years.
- Easy to install, suitable for covered or uncovered trash cans.
- IP68 protection level, it can still work in the case of rain and other weather conditions

3 Application

With the application software user can assign the collector resource work plan and route plan. Analyze task performance and find out solution to improve the system. Finally the objective of high efficiency, good environment, and low cost are achieved.

It is easy to install the device on different styles of trash cans. For example, for a trash can with a lid, the device can be mounted on the top, and for a trash can without a lid, the device can be mounted on the side wall.

Of course, this sensor can also be used in other environments, such as measuring liquid level. We can also customize the software version if you have other needs.



4 Specification

The specification of the Device DF703 Waste bin Sensor is given with all details.

Overview	Dimension	115*115*40mm
	Net Weight	150g
	Color	Black
	Shell Material	ABS

Detector	Principle	ultrasonic@40Khz
	Detection Range	4meters
	Blind area	15cm
	Accuracy of height	3cm
	Accuracy of temperature	2°C
	Accuracy of angle	2° (optional)
Radio	Communication	GPRS/GSM
	Frequency	850/900/1800/1900Mhz
Power	Internal Battery	Non-recharged Lithium Battery 8500mAh @ 3.6V
	Lifetime for one charge	More than 1 years at 4 hours report interval.
Environment	Operating Temperature	-20 ~ +70°C
	Storage Temperature	-40 ~ +85°C
	Protection Level	IP68

5 Mechanical Size

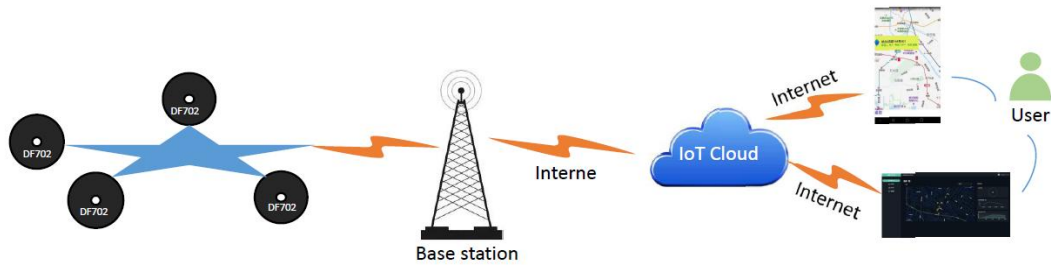


115mm*115mm*40mm

(Notes: only for reference, real product update frequently without notification.)

6 Software Platform

6.1 Network Diagram

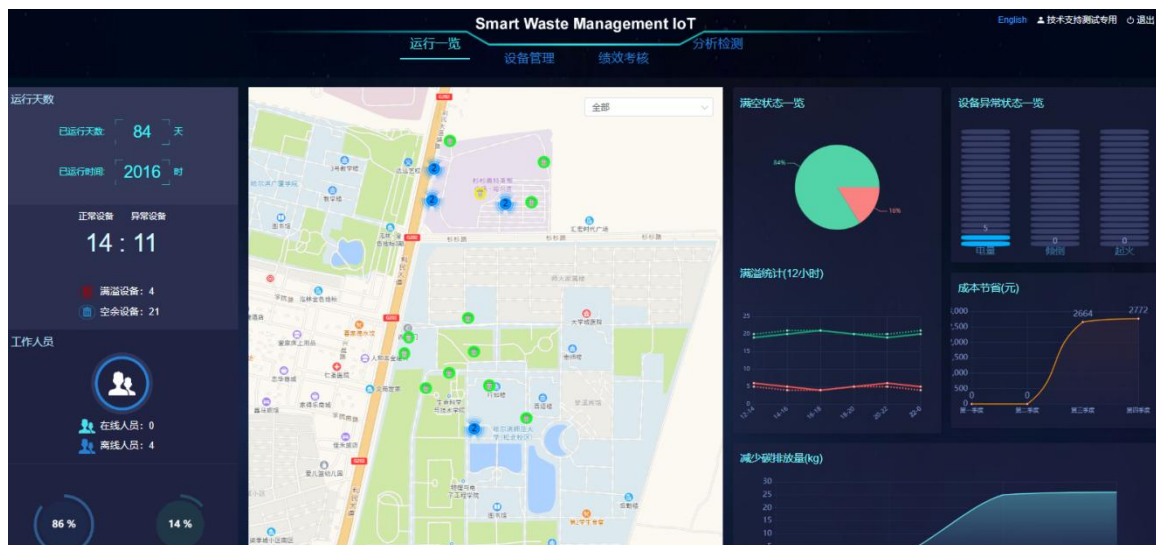


DF703 waste Bin detector is build through the GPRS module. it transmit the status via GPRS/GSM network to base station, then via internet network to network server to application server. Finally user can monitor the status remotely. This mobile application is very useful and helpful for the user at the finally user can monitor the status remotely.

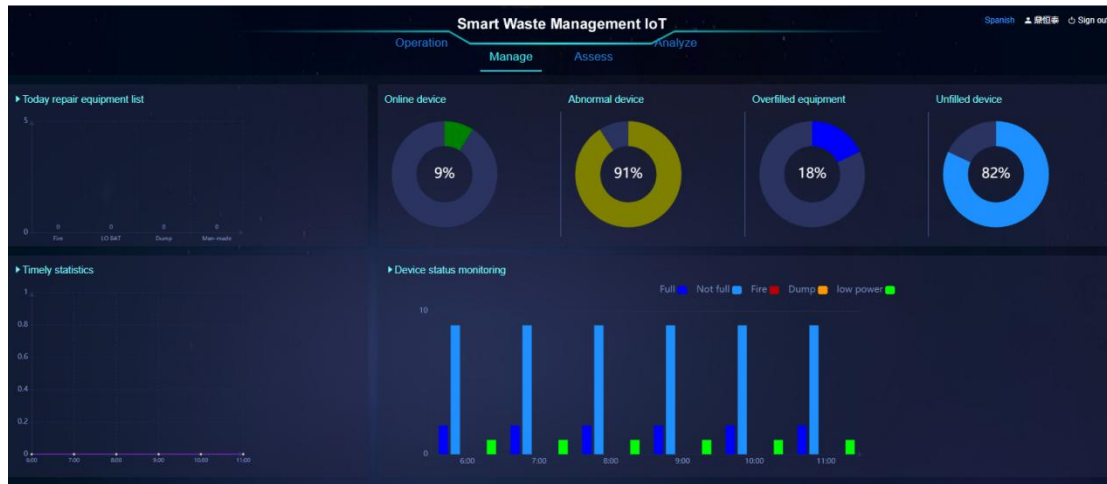
6.2 Application Software

With the application software user can assign the collector resource work plan and route plan. Analyze task performance and find out solution to improve the system. Finally the objective of high efficiency , good environment, and low cost are achieved.

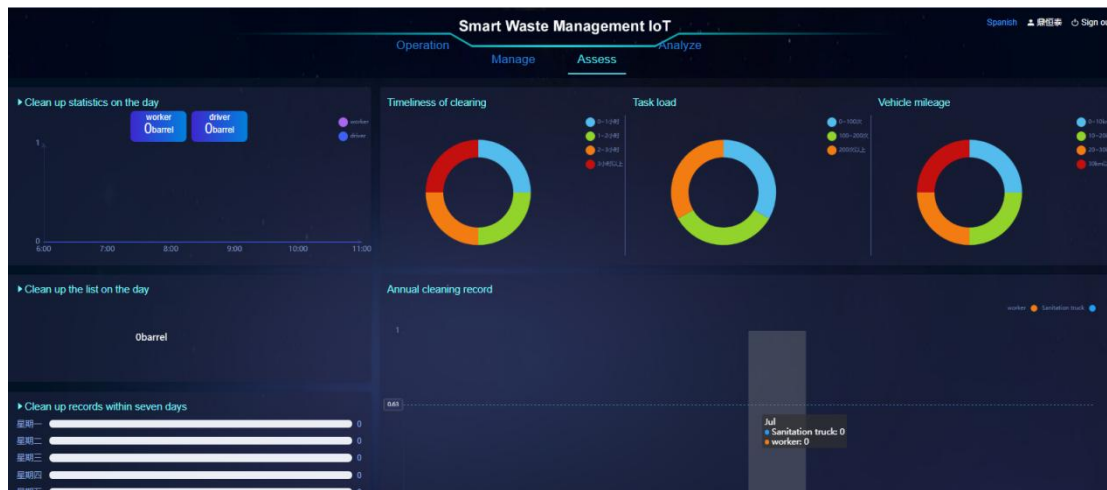
If you use a server for yourself, skip this item.



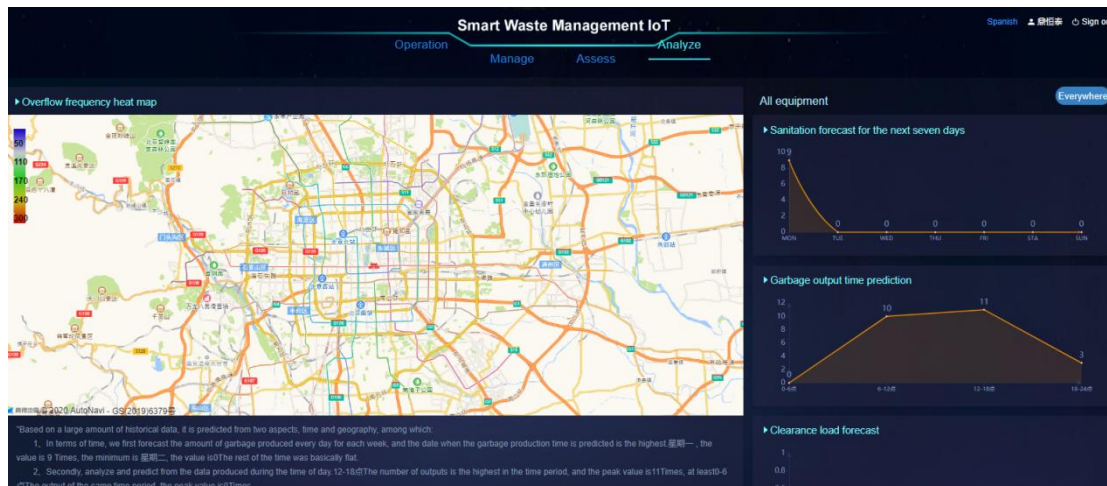
Operation



Manager



Assess



Analyze

7 Protocol and API Interface

The communication protocol(API Interface) is confidential is only open for customer who has purchase the device and sign the NDA(non-disclosure agreement) file with CNDingtek and his own Company. Please contact our sales team service@dingtek.com if you want to integrate the protocol/API with your own system.

8 Installation & Test

8.1 Boot sensor

The device is not connected to the power supply and the card is not installed by default. Please use the manual to install the SIM card before use, connect the connection, and then test according to the user manual.

8.2 Installation

Use the screws provided to mount the unit on the top or side wall of the trash can. Need to be punched and installed.

For trash bin with top cover, please fix the sensor with screw to the top cover.The sensor will be downward (transducer face downward).

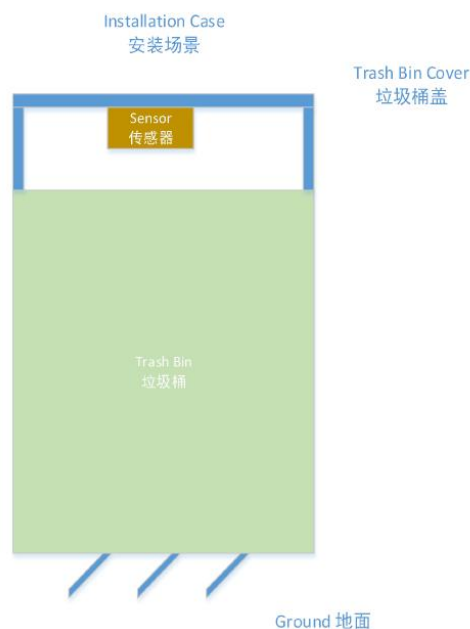


If trash bin is not with cover or not applicable to install at cover. Please try to install at side. Below is photo for side installation. (The stainless steel frame is not include in the standard package, it is additionally designed item to prevent the side wall transform of the trash bin.)



During the mounting, tool is necessary to drill hole and fasten the screw. Make sure the sensor is as vertical as possible.

If the space for installation it too small, please try to remove the top cover from the trash bin body and fasten it again. Then restore the top cover with the trash bin body.



9 Package

No.	Item	Quantity	Remarks
1	Smart Trash Bin Full Detection Sensor	1	Complete Box
2	Mounting brackets	1	
3	Screw	2	Fasten on
4	Magnetic Part	1	For Restart Sensor
5	Manual	1	Customer Guide
6	TTL	1	At least one per batch of equipment



14*14*11cm, weight 0.5kg,1unit.

10 Video Link

DF703 Test Video <https://youtu.be/86XVM0thJMY>