

Overview

DC510 smart people counter, which can be used to count the number of people entering and leaving each place; when the number of people exceeds the limit, it will immediately report the information to the cloud server through the built-in 4G module. Users can observe status information remotely.

Widely applicable for park, shopping malls, stadiums, public spaces, etc

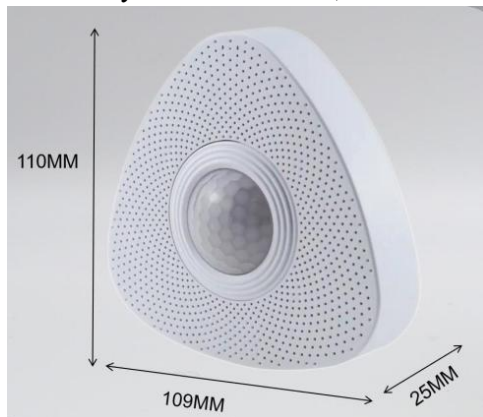


Key Features

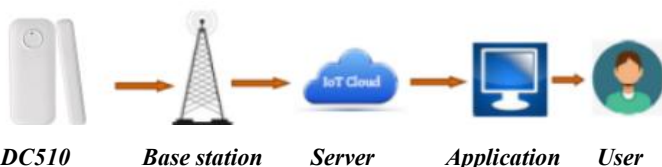
- ✓ Wireless connectivity 4G
- ✓ Low power consumption
- ✓ Battery powered
- ✓ Easy installation
- ✓ Open protocol
- ✓ Easily accessible

Mechanical Size

Main body: 110*109*25mm,



Network Diagram

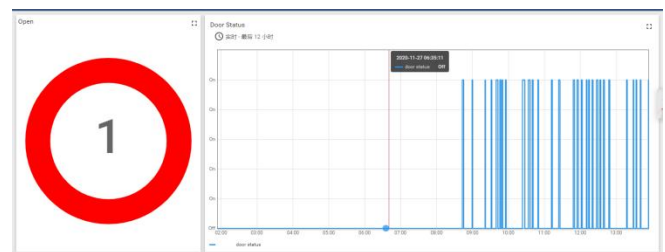


When the device detects the switch status of doors or windows, it sends a frame to the base station, then base station forward to cloud server, then to application. Finally user can monitor the status remotely.

Specifications

- ✓ Size: 110*109*25mm
- ✓ Net weight: 80g
- ✓ Shell material: ABS
- ✓ Color: White
- ✓ Theory: PIR
- ✓ Wireless Connectivity: 4G
- ✓ Band: LTE-FDD:B1/B3/B5/B8
LTE-TDD:B34/B38/B39/B40/B41
- ✓ Internal Battery: 1000mAh@ 3.7V Lithium Battery
- ✓ Recharge Interface: Micro-USB 500mA@5V
- ✓ Recharge LED: Red: not full battery;
Blue: Full battery
- ✓ Protocol: TCP/MQTT
- ✓ Operation temperature: -20 ~ +70°C
- ✓ Storage temperature: -40 ~ +85°C

Application



Users can check data CNDINGTEK's software application or their own software applications.