

## Overview

DT320 is an advanced, configurable indoor air quality sensor aimed at building automation. Users can monitor the level of methanal, ammonia, ethanol, cigarette remotely through built-in NB-IoT wireless module. The outputs are 4 levels of the PPM.

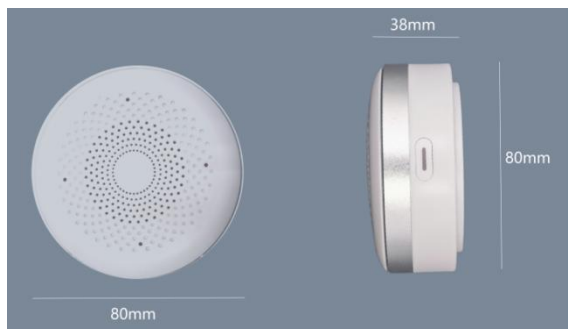
Widely applicable for hospitals, schools, campuses, dormitories, offices, factories, shopping malls, hotels, restaurants, cafes, stadiums, public spaces, etc

## Key Features

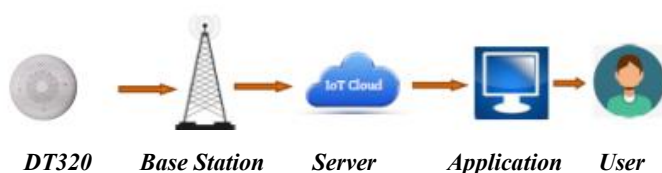
- ✓ Detection of multiple gases
- ✓ LED indicator
- ✓ Remote control and monitoring
- ✓ Wireless connectivity NB-IoT
- ✓ Low power consumption
- ✓ Battery powered or DC powered
- ✓ Quick & easy set up
- ✓ Open protocol
- ✓ Easily accessible

## Mechanical Size

Dimension: 80\*80\*38mm



## Network Diagram



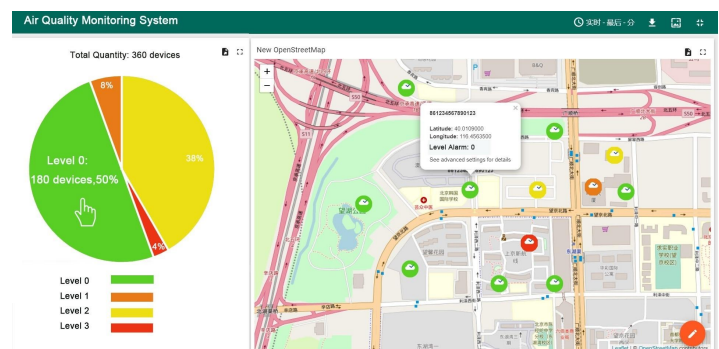
When the device detects the status of air quality, it sends a frame to the base station, then base station forward to cloud server, then to application. Finally user can monitor the status remotely.



## Specifications

- ✓ Measurement Elements: Methanal, Ammonia, Ethanol & Cigarette
- ✓ Output Level: Level 0: 0-1PPM; Level 1: 1-2PPM; Level 2: 2-5PPM; Level 3: 5-9PPM
- ✓ Power Consumption: Upload ≤600mA; Detection ≤100mA
- ✓ Internal Battery: 1000mAh@ 3.7V Lithium Battery, Life time 10 days.
- ✓ Recharge Interface: Micro-USB 500mA@5V
- ✓ Recharge LED: Red: not full battery; Blue: Full battery.
- ✓ Air Quality LED: Level 0: Green flash, Blue off.  
Level 1: Green on, Blue off.  
Level 2: Green off, Blue flush.  
Level 3: Green off, Blue on.
- ✓ Wireless NB-IoT Band: B3/5/8/20/28.
- ✓ Protocol: TCP/MQTT
- ✓ Working Environment -40 ~ 85°C, 5~95%RH

## Application



Users can check data CNDINGTEK's software application or their own software applications.